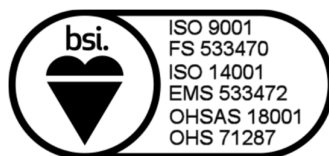


Rock & Alluvium

The Piling Specialists

**FEDERATION
OF PILING
SPECIALISTS**





Rock & Alluvium - The Piling Specialists

Our Company History

Rock & Alluvium has been providing augured piling solutions to the civil engineering and building sectors of the construction industry since 1963. In 1989 Rock & Alluvium joined the Galliford Group which later merged with Try to eventually become Galliford Try plc.

Continuous Flight Auger (CFA) and Rotary Piling are the most widely adopted piling techniques. These pile types can be installed in a variety of different soil types and different load conditions that include not just bearing piles but can also be designed to resist both tensile and horizontal loads for applications such as Secant (interlocking) or Contiguous piled retaining walls so making Rock & Alluvium one of the UK's leading piling contractors.

Rock & Alluvium is an independently audited member of the Federation of Piling Specialists (FPS) thus giving surety to our customers that best practices are being adopted for the design and installation of piles. We are proud to announce that we also have the following independently audited accreditations: - ISO 9001 - Quality Systems; OHSAS 18001 – Safety Management System; ISO 14001 – Environment; CHAS and Achilles – Building Confidence.

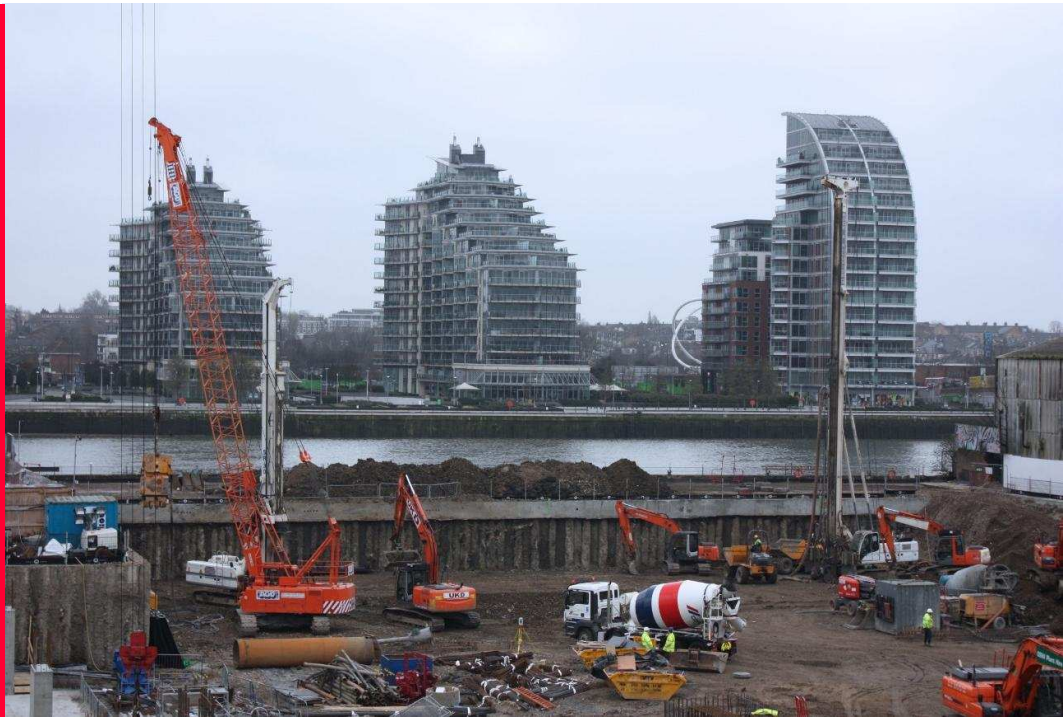
With piling experience across the UK providing the benefit of local geotechnical knowledge and our Fleet Services Depot, Rock & Alluvium can offer its customers a value for money service throughout England and Wales.

Key Contacts

- **Darren Brockett** – Managing Director
- **James Woodcock** – Estimating Manager
- **Nick Dewey** – Pre-Construction Manager



Bridge House, 27 Bridge Street, Leatherhead, Surrey, KT22 8BL
Tel: 01372 389 333 enquiries@rockal.com www.rockal.com



Ground Engineering Techniques

Continuous Flight Auger Piling (CFA Piling) and Rotary Piling

Designs for Bearing Piles, Secant and Contiguous Piled Retaining Walls and Working Platforms

Continuous Flight Auger Piling (CFA Piling)



CFA Piling is one of the most widely adopted piling techniques due to its low impact on the surrounding environment. It is ideal for use near any environmentally sensitive situation including but not limited to listed buildings, water treatment works and contaminated sites. We offer many innovative piling solutions, allowing for instance the installation of deep excavation Piled Retaining Walls.

With CFA Piling the flight auger is drilled into the ground to the required design depth. The auger is withdrawn whilst concrete (designed to a specific mix) is pumped through the hollow stem.

CFA Piling allows for the installation of piles up to depths of 28m and diameters up to 1050mm.

Rotary Piling



With Rotary Piling a temporary casing is installed through any granular material and sealed into a cohesive soil strata (clay) to prevent the bore collapsing (the top of the casing is left approx. 1m above piling platform level for safety reasons). The auger is drilled into the ground in sections advancing the dig by approximately 1-2m at a time, until the required toe level is achieved, leaving an open bore. The reinforcement cage is then levelled in and hung prior to the concrete being poured. The concrete is generally poured so that it lies just above the steel level on extraction of the temporary casing to protect the steel from damage during the dig process.

Rotary Piling allows for the installation of piles up to depths of 34m and much larger diameters up to 1200mm.

- Concrete can be placed to or below commencement surface level
- Temporary or Permanent Liners can be installed
- Piles can be installed through particularly stiff or hard strata
- Inspect the pile boring during construction



Design



Our in-house design team can design the piles to meet your loading requirements. To determine the diameter and depth of pile required they will use the site investigation report. This report contains various information about the site including the boreholes that show how the soil strata changes with depth.

From the soils information the design team will produce a formal design package using recognised CFA or Rotary design parameters and the latest standards to provide the pile depths, diameters and reinforcement required.

Health,
Safety &
Environment

FEDERATION OF PILING SPECIALISTS



Accredited Contractor
CHAS.co.uk



Rock & Alluvium - The Piling Specialists

Health, Safety & Environment

- Support from a dedicated Health, Safety and Environmental advisor from Galliford Try Services HS&E team.
- Near Miss and Observation Reporting Scheme in place.
- Fully Audited Member of the Federation of Piling Specialists (FPS)
- CHAS accreditation – Health & Safety Management
- Accredited to the NHBC Health and Safety Competence Assessment Scheme (SAFEmark) for Contractors.
- Winner of the Galliford Try Infrastructure Excellence Award for the 'Health and Safety' category.
- Member of the Builders' Conference Trade Association and the British Safety Council (BSC).
- OHSAS 18001: 2007 Accredited – Occupational Health & Safety Management System
- ISO 9001:2008 UKAS Accredited – Quality Management System
- EMS 14001:2004 Accredited – Environmental Management System
- 100% CSCS / CPCS Workforce
- All rig supervisors hold the two day CITB Site Supervisors Safety Training Scheme (SSSTS) or FPS equivalent.
- Operations Managers and Rig Supervisors attending the CITB Site Managers Safety Training Scheme (SMSTS) on a rolling programme.
- Behavioural Based Safety training has been rolled out to management with operatives scheduled to attend courses shortly.
- Committed to controlling our environmental impact and seeking ISO1001:2004 accreditation.
- Positive and proactive approach to waste management and engage in sustainable procurement.
- No enforcement actions or prosecutions have been issued to the company.
- Target an AFR of zero every year.
- Committed to continual improvement and promotion of Health, Safety and Environmental practice throughout the business unit.
- HS&E and Operations departments have completed IOSH Managing Environmental Responsibilities course.
- Involvement and communication with workforce via conferences, safety days, briefings and reporting.

www.rockal.com

Rock & Alluvium

Where we
are located

Rock & Alluvium 



Head Office
Leatherhead, Surrey
MD: Darren Brockett
Estimating: Stan Goddard
Operations: Nick Dewey
Tel:- 01372 389 333



Fleet Services
Essex

Rock & Alluvium – The Piling Specialists

Head Office and Fleet Services

Our Head Office is based in Leatherhead, Surrey from where we provide piling solutions across the UK. We also have a fleet services division operating out of Essex. These offices are available to help with your general piling enquiries and to provide a cost-effective tender tailored to your needs.

Our fleet services division supports sites nationwide and provides services that include:-

- Plant Maintenance
- Piling Rig servicing
- Reinforcement preparation
- Material storage
- Vehicle loading and off-loading facilities
- Fully trained staff for maintenance, servicing and on-site repairs



www.rockal.com

Rock & Alluvium 

Head Office

Rock & Alluvium Ltd, Bridge House, 27 Bridge Street, Leatherhead, Surrey, KT22 8BL
Tel:- 01372 389 333 E-mail:- enquiries@rockal.com Website:- www.rockal.com

Rock & Alluvium Ltd is part of the Galliford Try Group

www.rockal.com